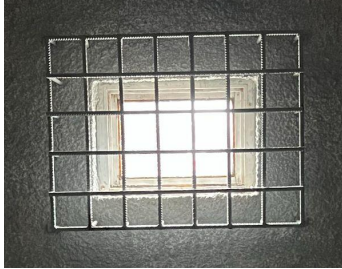


# Master plan

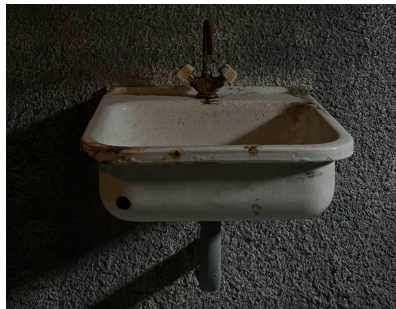
**Weight:** 4 tons  
**External dimensions:**  
2950 mm high,  
3960 mm long,  
2380 mm wide.

- Materials:**
- Metal galvanized profiles
  - Cement particle board
  - Coating (MIDA)
  - Plasterboard panels
  - Steel sheets
  - Wooden bench, bed, table and chair (replicas)
  - Cement mixture
  - Ceramic sink (non-functional)

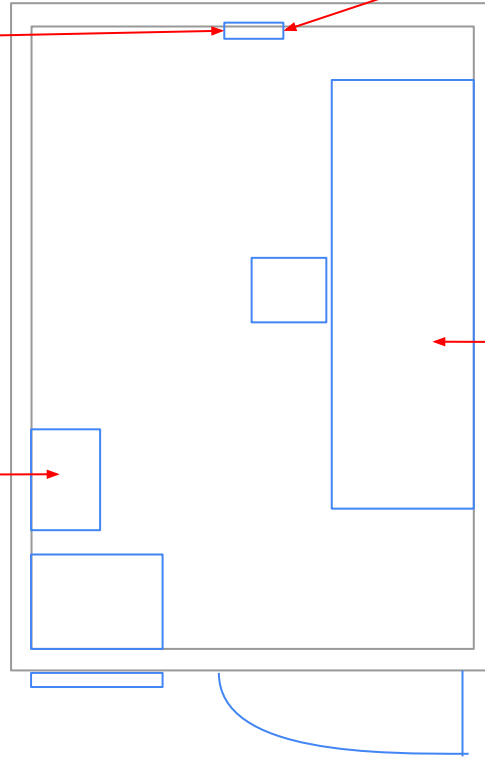
## Barred window



## Sink (non-functional)



2380 mm



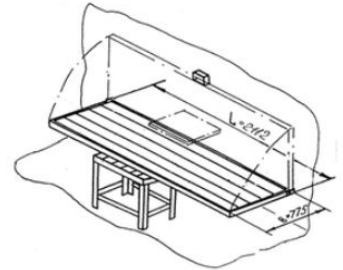
## Heating battery (non-functional)



## Folding bed with table and stool



3960 mm



# Master plan

**Weight:** 4 tons

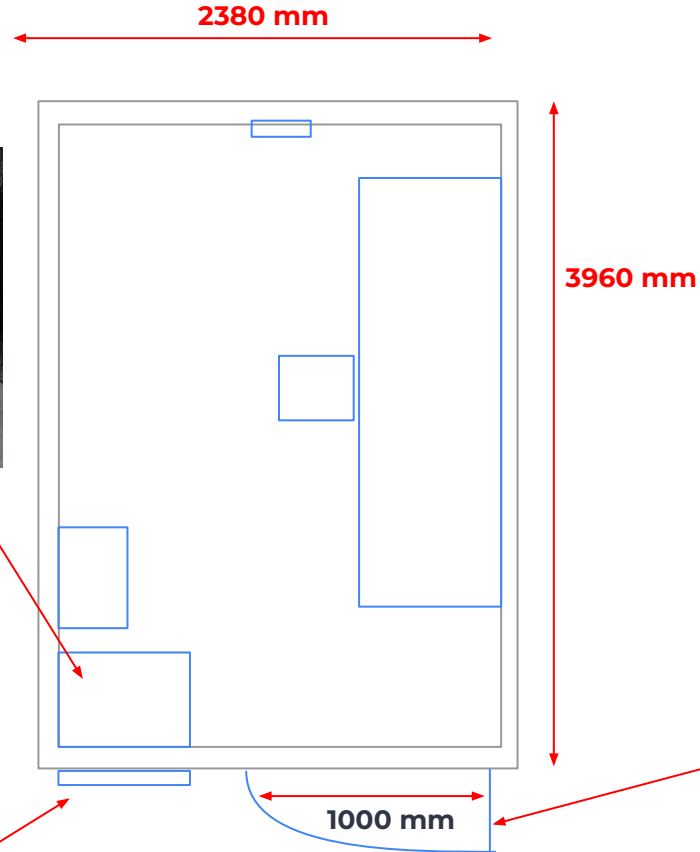
**External dimensions:**

2950 mm high,  
3960 mm long,  
2380 mm wide.

**Materials:**

- Metal galvanized profiles
- Cement particle board
- Coating (MIDA)
- Plasterboard panels
- Steel sheets
- Wooden bench, bed, table and chair (replicas)
- Cement mixture
- Ceramic sink (non-functional)

**Squat toilet**  
(non-functional)



**Metal door with protective grille**



## Left side

**SHIZO** is the harshest punishment in the legal prison hierarchy. The same can be said about the illegal one: it is the place where most torture and murder take place. There is almost no ventilation. The bunk is fastened to the wall for the day. You can only get hot water three times a day — just one glass, together with a spoon and a bowl, for breakfast, lunch and dinner. Visits and parcels from the outside are forbidden. You are only given pen and paper for 35 minutes a day, and you only get one book for the entire period of detention.

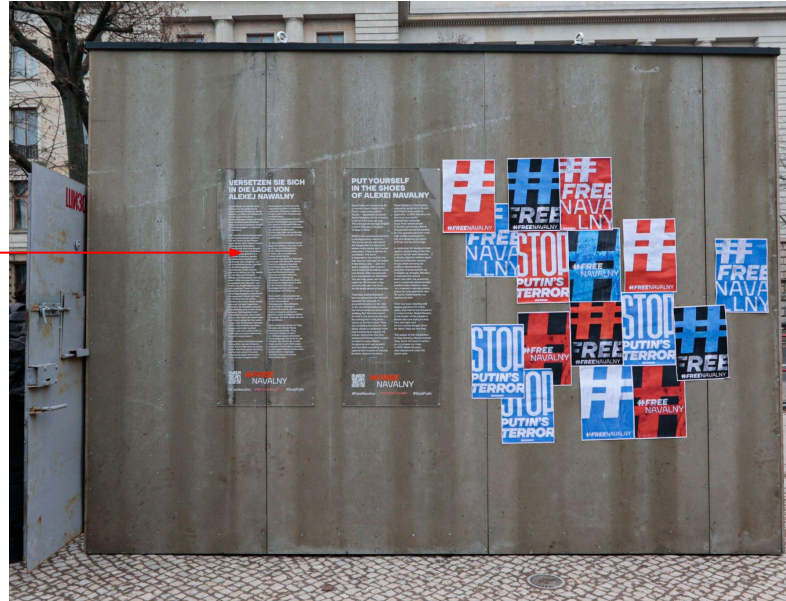


2950 mm

3960 mm

## Right side

**Plexiglas  
information  
panel with text**  
(see below)  
2 sheets  
100 x 150 mm



2950 mm

3960 mm

## View of the wall with the window



**Barred window**  
300 x 400 mm

2950 mm

2380 mm



**Battery slot**



**Heating battery  
(non-functional)**  
5 sections - 37.5 kg





## Door

**The monitor is outside** to the left of the door under the shockproof glass.  
Monitor dimensions:  
432.66 x 731.44 x 70 mm



**Door**  
(1000 mm wide)



**Squat toilet**  
(non-functional)  
dimensions:  
560x490 mm

## Text

Put yourself in the shoes of Alexei Navalny

Step inside and experience for a moment how it feels to be Putin's main enemy within Russia — opposition politician Alexei Navalny, who is currently in jail on a trumped-up case. This is the punishment cell (SHIZO) in which Navalny has spent 91 days in 2022.

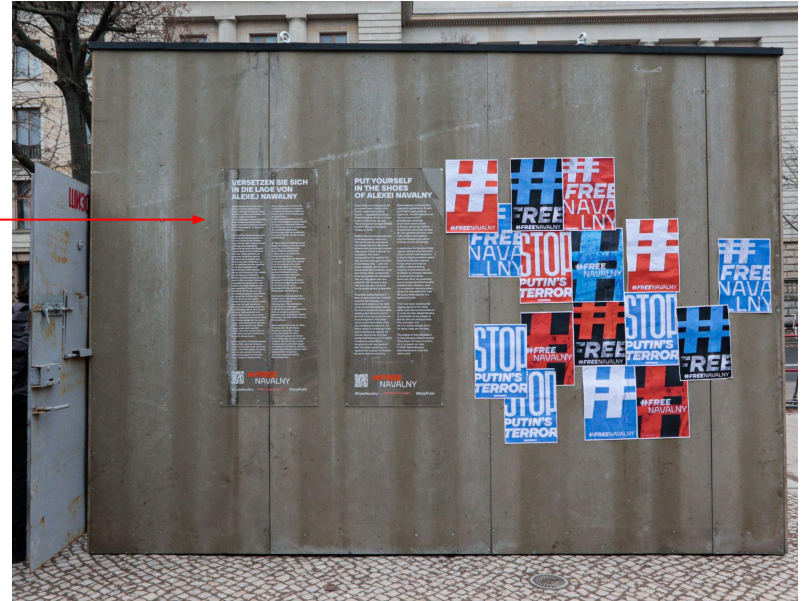
SHIZO is the harshest punishment in the legal prison hierarchy. The same can be said about the illegal one: it is the place where most torture and murder take place. There is almost no ventilation. The bunk is fastened to the wall for the day. You can only get hot water three times a day — just one glass, together with a spoon and a bowl, for breakfast, lunch and dinner. Visits and parcels from the outside are forbidden. You are only given pen and paper for 35 minutes a day, and you only get one book for the entire period of detention.

They keep putting Navalny in here on absurd and far-fetched excuses: for example, for an undone button on his robe or for not immediately putting his hands behind his back while walking. But the real reason for that is the same as the one for putting him in the penal colony in the first place. They are punishing Navalny for not being afraid to challenge Putin and continuing to expose his crimes. During the trial that sentenced Navalny to 9.5 years in prison in early March, he gave an anti-war speech and has been speaking out against the invasion of Ukraine at every opportunity since.

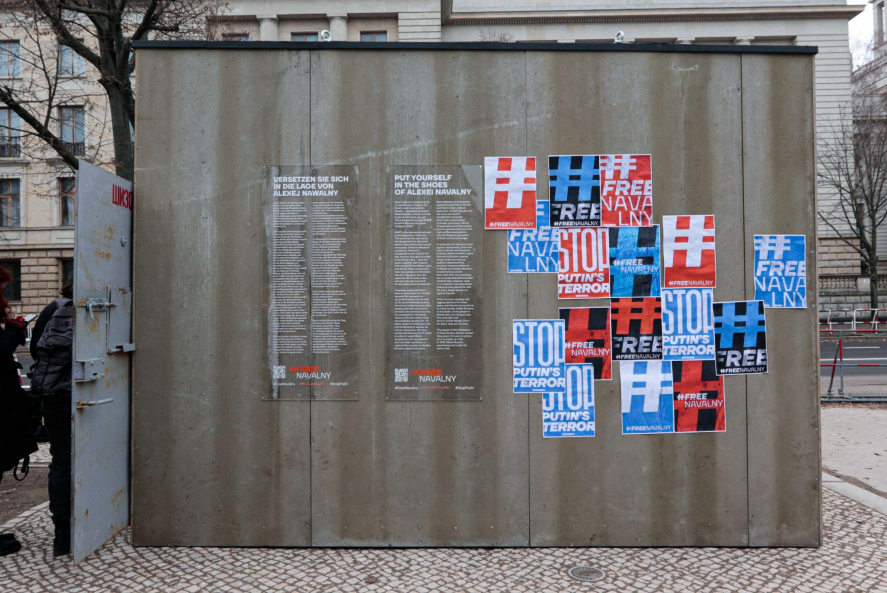
Alexei Navalny is the leading opposition politician in Russia and Putin's main political opponent. In 2017, Navalny ran the most successful presidential campaign since Putin seized power in Russia, garnering millions of supporters across the country. He has spearheaded the most high-profile investigations into the rampant corruption of Putin and his entourage.

In retribution for Navalny's fight against dictatorship, Putin first tried to kill him with Novichok, a deadly chemical warfare agent favored by Russian special forces when carrying out political assassinations, and then imprisoned him on trumped-up charges. Navalny is experiencing severe back pain after the poisoning, but is constantly denied proper medical help. However, even in a maximum-security prison where he may spend the next 35 years, Alexei speaks out against the war.

Putin has been stealing and rigging elections for many years, and now he has moved on to mass murder. Alexei Navalny is the leader of the people in Russia who are trying to stop him, and right now he is in mortal danger. Don't be silent. Help set him free. The author of this installation is Oleg Navalny, Alexei's brother. Oleg spent 3.5 years in prison on a trumped-up case. In 2021, Alexei Navalny was imprisoned under the same case. Since then, several more criminal cases have been trumped up against him.  
#FreeNavalny #StopPutin  
free.navalny.com



**SHIZO exhibition in Berlin**  
**January 23 - February 23 2023**





**SHIZO exhibition in Berlin**  
**January 23 - February 23 2023**

